

“AGUILA”

43ft Hatteras

A multi-use platform for uwfilm&photography, scuba diving, sportfishing, surfing, scientific and adventure boat expeditions along the Pacific coast of western pacific.



Powered by twin turbo Detroit diesel 6V92 475hp each. She cruises at 10 knots.

900Nm range at 9Kn long range cruise speed.

GPS/Chartplotter, Fishfinder, Sounder 1kW Chirp transducer 1800ft, Garmin Airmar SideScan transducers

330ft deep 1200ft wide WiFi screen capability

94NM Radar, VHF radios, SSB Radio, Video & Audio Entertainment System

Generator1: Kohler 8000kw Generator2: Honda 2000kw 2kw Power Inverter Watermaker (20Gln/hr)

Dive Compressor and Nitrox Filling Station with O2 Booster Pump for Closed Circuit Rebreathers

110v Recharging Batteries Station

Hydrophone

12pax offshore Lifteraft

Oversized Parachute Anchor (for multiple days offshore expeditions)

Wide Deck area and Swim Platform

A/C Salon and 3 Cabins..... All Safety Equipments...Sat Phone

Full Insured

20ft MK5 HD Zodiac Tender w/40hp



The interior has just been upgraded and has 2 fridges, microwave, modern ceramic kitchen, coffee maker etc.
3 independent A/C units.... 2 flatscreen TVs with DVD player and entertainment system.



3 Cabins and 2 Bathrooms.....accommodate 6 guests + 3 crew (extra beds on flybridge and bow)

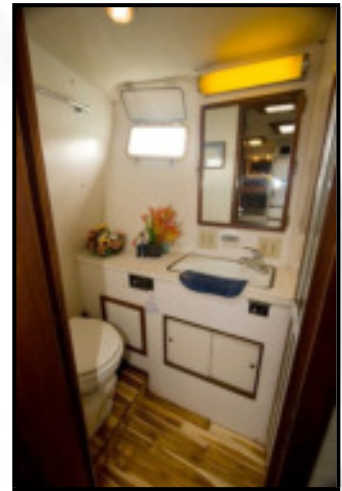
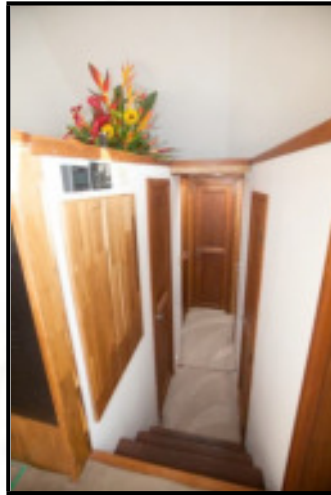
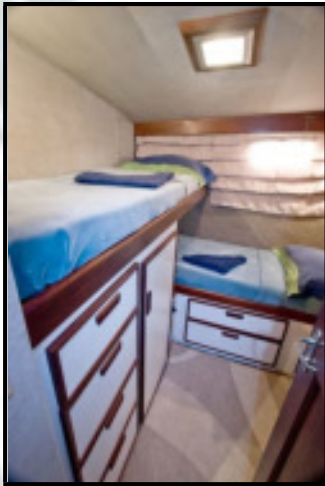
Guests Cabin #1 twin beds with shared head w/shower



Guests Cabin #2 twin beds with shared head w/shower



Guests Cabin #3 with twin beds and a guests head w/shower.





Exclusive agency - BigAnimal Global Expedition
Ph +1 415 812 9476

info@biganimals.com

amos@biganimals.com

